

Crane

Tower Humidifier

FOR MODEL: EE-6917



If you have any questions about the operation of your humidifier, please contact Crane Customer Care.

Toll Free: 1-888-599-0992

Email: Customer-Service@Crane-usa.com



Information to the user:

- a) The interference potential of the device or system;
- b) Maintenance of the system;
- c) Simple measures that can be taken by the user to correct interference.



**PLEASE READ AND SAVE ALL INSTRUCTIONS TO ENSURE
THE SAFE AND EFFECTIVE USE OF THIS HUMIDIFIER.**

SAVE YOUR DATED PROOF OF PURCHASE!

[You will need this in case of warranty]

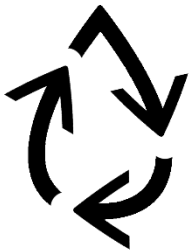


staple
tape
or paperclip
your
receipt
HERE

TABLE OF CONTENTS

Table of Contents & Sustainability	P. 1
Safety Instructions	P. 2-3
List of Main Parts	P. 4
Technical Specifications & Before Use	P. 5
Assembly & Operation	P. 6
Maintenance & Storage	P. 7
Customer Care & Troubleshooting	P. 8
Warranty	P. 9

CRANE & SUSTAINABILITY



Crane USA is dedicated to your environment both inside and outside your home. We know if cleaned and maintained properly, our products last for years helping to reduce unnecessary use of resources and emissions making new products.

The Crane manual you are holding is from recycled materials with no added finishes or harmful dyes. If the humidifier should no longer operate, please be sure to dispose of the unit in an environmentally friendly way by taking it to a public collection point.

PLEASE DO NOT PLACE BROKEN HUMIDIFIERS WITH YOUR REGULAR HOUSEHOLD WASTE.

IMPORTANT SAFETY INSTRUCTIONS



WARNING! READ AND SAVE THESE INSTRUCTIONS. Failure to follow all of the instructions listed below may result in electric shock, fire and/or serious personal injury.

1. **It is advisable to carry filled Water Tank with two hands.**
2. **DO NOT operate outdoors. This humidifier is intended for indoor use only.**
3. Always have water in the Water Tank when operating the unit.
4. Use only clean, cool tap water to fill the Water Tank (filtered or distilled water is recommended to avoid white dust if tap water is too hard). **DO NOT use hot water.**
5. Be sure that the Mist Channel is firmly tightened in the Water Tank. Always have the Mist Nozzle in place while the unit is operating. Place the humidifier so the mist aims away from children, walls, furniture and electrical appliances.
6. Use only a 120V AC outlet. **ALWAYS plug and unplug unit with dry hands to avoid electric shock.**
7. Never operate the unit with a damaged cord or plug.
8. Always place the unit on a smooth, flat, lint-free, non-metallic, waterproof and level surface and position unit away from direct sunlight. Keep the cord away from heated surfaces and areas where it could be walked on or tripped over. Unplug the unit when not in use and whenever you clean or move the unit.
9. Do not add medication or essential oils into the Water Base or Water Tank. Do not cover any openings on the unit or insert objects into any openings.
10. The unit should not be left unattended in a closed room as the air could become saturated and leave condensation on walls or furniture. Leave room door partly open when humidifier is being operated.
11. When cleaning the inside of the humidifier, keep water away from the Fan Vent. **Turn off and unplug the humidifier to wipe the exterior** (except the electrical controls) with a damp cloth. Humidifier requires regular cleaning. Please refer to the MAINTENANCE INSTRUCTIONS in this manual.
12. Do not tilt or tip the humidifier or attempt to empty or fill it while it is in operation.
13. Do not use a detergent to clean any parts of the unit that contain water. Detergent film dissolved in the water supply can interfere with the output of the unit. Instead, always use white vinegar mixed with water to clean the humidifier.

SAVE THESE INSTRUCTIONS!

UVC Bulb Information



14. **NEVER** look directly at the UV-A Bulb while it is illuminated - doing so could cause temporary or chronic damage to your eyesight or may even result in the loss of vision. UVC Bulb is harmful to bare skin and eyes. To prevent exposure to UV light, turn off the power to the humidifier before removing the cover, refilling, or cleaning.

GENERAL SAFETY INSTRUCTIONS



WARNING! Read and understand all instructions. Failure to follow all instructions listed below may result in electric shock, fire or serious personal injury. The warnings, cautions, and instructions discussed in this instruction manual cannot cover all possible conditions and situations that may occur. It must be understood by the user that common sense and caution are a factor which cannot be built into this product, but must be supplied by the user.

THIS HUMIDIFIER IS NOT A TOY!

Do not let your child play with this humidifier. Serious injury and electrocution might be possible. This humidifier has to be operated by an adult only. Children should be supervised to ensure that they do not play with the humidifier.

SAVE ALL INSTRUCTIONS!

CAUTION: A short Power Supply Cord is provided to reduce the risk of personal injury resulting from becoming entangled in or tripping over a longer cord. Extension cords are available from local hardware stores and may be used if care is exercised in their use. If an extension cord is required, special care and caution is necessary. Also, the extension cord must be (1) marked with an electrical rating of 120 V and at least 13 A., 1625 W., and (2) the cord must be arranged so that it will not drape over the countertop or tabletop where it can be pulled on by children or accidentally tripped over.

ELECTRIC POWER

If the electric circuit is overloaded by other appliances, your humidifier and/or appliances may not operate properly. The humidifier should be operated on a separate electrical circuit from other operating appliances.

POLARIZED PLUG

This humidifier has a polarized plug (one blade is wider than the other).

As a safety feature to reduce the risk of electrical shock, this plug is intended to fit in a polarized outlet only one way. If the plug does not fit fully in the outlet, reverse the plug. If it still does not fit, contact a qualified electrician. Do not attempt to defeat this safety feature.



SAFETY WARNING

Although your humidifier is easy to operate, for your safety, the below warnings must be followed:

1. Do not place the humidifier near a heat source.
2. Never leave the humidifier unattended while connected to the electrical outlet.
3. To avoid any accidents, never cover the Mist Nozzle when the humidifier is in operation.
4. Do not unplug from the wall socket by pulling on the supply cord.
5. The humidifier must be unplugged:
 - A. Before either filling or emptying the Water Basin and/or Water Tank.
 - B. Before any cleaning or maintenance is performed.
 - C. After each use.
 - D. If it appears to be faulty.

THIS PRODUCT IS INTENDED FOR HOUSEHOLD USE ONLY.

LIST OF MAIN PARTS

Fig.1 (Top of Tank)

1. Cover
2. Mist Nozzle
3. Water Tank
4. Mist Channel

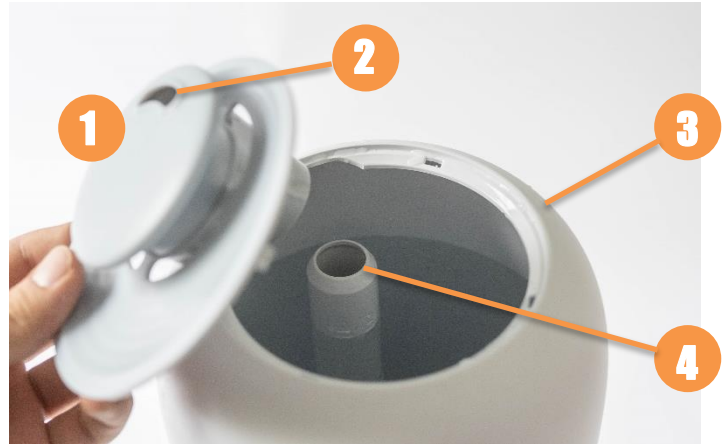


Fig. 2 (Base)

5. Control Panel
6. Water Level Float
7. Water Level Sensor Cap and Float
8. Nebulizer
9. Fan Vent
10. Aroma Tray
11. Germicidal UV-A Light
12. Color Changing Night Light



Fig. 3 (Control Panel)

13. Power
14. UV Light
15. Timer
16. Humidity Reading (RH)
17. Mist Level Indicator
18. Remote Control



TECHNICAL SPECIFICATIONS

Rating Voltage	120V
Frequency	60Hz
Power	28W
Water Tank Capacity	8L / Approx. 2 gallon
Mist Output	250mL/H \pm 15%
Germicidal UV-A Light	400nm

BEFORE EACH USE:

CHECK HUMIDIFIER PLACEMENT:

Place the Humidifier on an elevated, non-metallic, lint-free, waterproof, level surface.

- **DO NOT PLACE ON CARPET OR TOWEL.** The fan vent is located on the bottom of the humidifier base. The fan vent **MUST NOT** be obstructed.
- **DO NOT PLACE ON WOOD SURFACE** or near furniture that can be damaged by too much moisture.

A NOTE ABOUT HUMIDITY

- To reduce excessive humidity or condensation, especially in small rooms, leave the room door open and adjust mist intensity to the low output setting.
- Too much humidity in the room may allow the moisture to accumulate on surfaces where bacteria and fungi can grow. Moisture that gathers may also damage furniture and walls, especially wallpaper.
- Ideal relative humidity level is between 45% and 65%.

BEFORE FIRST USE:

1. Ensure gasket is attached securely onto bottom of the mist chamber.
2. Ensure the MIST CHANNEL is attached securely in the water tank by turning the channel all the way to the right.
3. Place humidifier on a flat surface.



CAUTION

- **DO NOT** attempt to operate the humidifier without water in the Water Tank.
- **DO NOT** plug or unplug the Power Cord with wet hands as electric shock could occur.
- **DO NOT** use any additives (such as oils, fragrances, or vapor/steam medications) to the water tank. Use essential oils **ONLY** in the Aroma Tray.

ASSEMBLY & USE

NOTE: Use the Remote Control to use ALL functions on the humidifier!

ALWAYS use fresh cool water when operating the humidifier.

1. Remove the cover from the water tank, fill water into the water tank directly. Fill with cool water only. **NOTE: Filtered or distilled water is recommended to avoid white dust if tap water is too hard.**
2. **MAX Water Fill** is to the TOP of the clear window on the tank.

DO NOT fill water above the top of the window.

DO NOT use hot water.

DO NOT add any medication, essential oils, or salt to the tank. (Essential oils should only be used in the aroma tray.)

DO NOT pour water down the Mist Channel.

3. Ensure Mist Nozzle is attached to Cover. Place COVER on top of water tank, ensuring the bottom of the cover lines up with the mist channel in the water tank. Plug cord into electrical source. All indicator lights will flash once and beep.

Note: Do not attempt to move the humidifier while Water Tank is placed on the Humidifier Base. Doing so may cause leakage of water and/or Humidifier Base to overflow.

4. **Power:** Touch to turn power on and Touch and Hold for 3 seconds to turn the power off. When powered on, the starts on medium and continuous mist (CO) setting.
5. **Adjust Mist Level** - Short Press ☉ to adjust the mist level to Low, Medium, and High.
6. **UV Light:** Touch to turn the UV light on and off. UV indicator light is shown on the display panel when the UV is turned on.
7. **Timer:** Touch to set the timer in increments of 1 hour from 1-12 hours. The unit will turn off when the scheduled operating time has elapsed. To Cancel the Timer, touch and hold the Timer Icon for 3 seconds. Timer indicator light is shown on the display panel when the timer function is on.

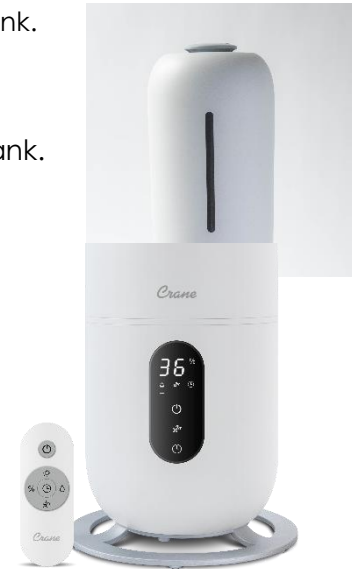
AUTO SHUT OFF: When the humidifier runs out of water, the humidifier will beep 3 times and the unit will stop working. Refill the water the water tank and turn on the humidifier.

Remote Control Operation

This humidifier includes a remote control to operate ALL functions on the humidifier. Simply pull the plastic tab before use to activate.

- ☉ - Turn the power On/Off
- % - Press to set the desired humidity between 40%-80%
- ☉ - Press to adjust the mist level to Low, Medium or High
- ☀ - Press to turn UV-A light On/Off
- 🕒 - Press to set the timer between 1-12 hours
- ☀ - Press to turn On/Off color changing night light. Long Press To turn on Sleep Mode (display turns off). Press again to turn Display back on.

Note: When programing humidity level and timer function, the Display panel will flash 5 times to save settings. **The display panel will revert to the current humidity.**



AROMA TRAY: Remove tray, add essential oils to the included unscented pad (or with any compatible scent pad) as desired and replace tray before running humidifier.

AUTO SHUT OFF: As a safety feature, when the humidifier runs out of water or the tank is removed from the base, the humidifier will stop working. The humidifier will Beep 3 times and the ⓪ will flash three times. Unplug the unit before removing and refilling the water tank or placing the tank on the base.

MAINTENANCE

Cleaning and disinfecting on a regular basis is important for maintaining the performance of your humidifier.

IMPORTANT: Water left in the tank or base when not in use may result in buildup of mineral deposits and bacteria which may inhibit the output efficiency as well as void the warranty. If water remains in the Water Tank for more than a day or two, bacterial growth is possible.

DAILY MAINTENANCE

1. Always turn off and unplug from outlet before cleaning.
2. Empty water from the water tank and humidifier base daily.
3. To Empty remaining water in the tank: lift the tank from the base and take tank to a sink. Hold Tank over the sink and unscrew the MIST CHANNEL by turning the Mist Channel to the left. Pull Mist Channel out of tank. Water in the tank will empty through the bottom of the tank. Leave the water tank Cover and Mist Channel off to allow air to circulate when not in use.
4. Rinse clean water through mist channel.
5. Clean aroma tray and replace aroma pad when changing oils.
6. Wipe and dry humidifier base with a clean, dry cloth or paper towel.

WEEKLY MAINTENANCE

1. Always turn off and unplug from outlet before cleaning.
2. Empty water from the water tank as directed in Daily Maintenance above and humidifier base. Attach Mist Chamber into tank by inserting into opening on bottom of tank and turning channel to the right to secure into place completely.
3. Fill the water tank with about a gallon of warm water. Add 4 Tablespoons of white vinegar. Let sit for 20-30 minutes. Use brush to clean any build up. Empty the vinegar and water solution from the tank. Rinse water tank with plain water.
4. Wipe and clean aroma tray.
5. Rinse water and vinegar solution through the mist channel. Use brush to clean any build up.
6. Add 2 cups of water into base and add 1 tablespoon of white vinegar. Let sit for 20-30 minutes, then, clean all interior surfaces with a soft cloth or brush provided to help remove scale. Rinse humidifier base with plain water. Avoid getting water into the fan vent. Wipe dry with a clean, soft cloth. Wipe the exterior surface water tank and humidifier base with a soft, dry cloth. NEVER IMMERSER HUMIDIFIER BASE IN WATER.
TIP: Clean the nebulizer and Water Level Float with a damp cloth or cotton swab after soaking.

REPLACING THE BATTERY

1. Remove cover by pressing the tab and pulling the cover off..
2. Remove old battery and replace with new battery.
3. Replace the cover on to the remote.

END-OF-SEASON MAINTENANCE & STORING YOUR HUMIDIFIER

1. Always turn off and unplug from outlet before cleaning.
2. Empty water from the water tank and humidifier base.
3. Disinfect water tank and humidifier base with the white vinegar and water solution as described in weekly maintenance.
4. Make sure that water tank has air dried without the cover and mist channel on the tank.
5. Make sure the humidifier base, mist channel, cover and water tank are completely dry before end of season storage. Store the humidifier in a cool dry place.
6. **DO NOT** place any heavy items on top of humidifier during storage as this may result in possible damage of the humidifier.
7. Store the cord in a clean, dry location away from metal objects. Always check the plug before use to ensure metal items have not become attached.

CRANE CUSTOMER CARE

If you have any questions with regard to the operation of this humidifier, or are in need of a spare part, please contact Crane Customer Care.

TROUBLESHOOTING

DO NOT attempt to repair the motor yourself.

If the humidifier continues to not operate, please contact Crane Customer Care.

Problem	Possible Cause
Leaking water	<ul style="list-style-type: none">▪ Check to make sure the water tank is properly placed on the Base▪ Make sure the Mist Channel is securely attached in the Water Tank
No mist/Weak mist being produced	<ul style="list-style-type: none">▪ Raise the humidity level setting▪ Check to make sure the humidifier is plugged in correctly and press the Power Button▪ Add water to the Water Tank▪ Perform weekly maintenance on the Base (pg.7)
Mist falling to the surface	<ul style="list-style-type: none">▪ Adjust the Mist Setting to a lower setting▪ Clean the Mist Nozzle, Cover and Mist Chamber to make sure it is free of debris
Strange Odor	<ul style="list-style-type: none">▪ Clean the Water Tank and Base as instructed on the Maintenance (pg.7)
Dripping from Mist Nozzle	<ul style="list-style-type: none">▪ Ensure Mist Nozzle is attached securely to the Cover▪ Turn down mist level to a lower setting
No Power/No lights on Display	<ul style="list-style-type: none">▪ Ensure humidifier is plugged into a wall outlet▪ Check to make sure the power is on
Out of Water Indicator when Full of Water	<ul style="list-style-type: none">▪ Clean Water Level Float (pg.7)▪ Remove Water Level Sensor Cap and Float from the post they are on. Wash both parts in warm soapy water and rinse well. Replace the Water Level Sensor Cap and Float securely back onto the post

Replacement parts available at www.crane-usa.com

CRANE WARRANTY

For more information regarding the warranty policy,
please visit our website: www.crane-usa.com/customer-service

LIMITED WARRANTY

Thank you for purchasing a Crane product which has been tested to meet our stringent quality standards. This product is warranted to be free from manufacturing defects under normal use and conditions for 1 year.

**PLEASE CONTACT US BEFORE RETURNING THIS PRODUCT TO THE STORE.
CALL CRANE CUSTOMER CARE FOR PROBLEMS AND QUESTIONS. WE CAN HELP.**

WARRANTY REQUIRES A DATED PROOF OF PURCHASE.

This warranty is void if the defect is due to accidental damage, misuse, abuse, neglect, improper repair or alteration by unauthorized persons, or a failure to follow operating instructions provided with the product. **Including the use of essential oils, vapor pads or additives in the water tank and humidifier base. Only use essential oils or vapor pads in the aroma tray.** This warranty does not apply to normal wear and tear or commercial use.

In no event shall liability exceed the purchase price paid by the purchaser of the product. Under no circumstances shall there be liability for any loss –direct, indirect or incidental –or consequential damage arising out of, or in connection with the use of this product.

This warranty is valid only in the 48 contiguous states plus the District of Columbia and excludes Puerto Rico and the Virgin Islands. This warranty is effective only if the product is purchased and operated in the United States of America.

Any instructions or warranty included in this manual may be subject to change without notice. For the most up-to-date instructions and warranty information, please contact us or visit our website.

**TO RECEIVE WARRANTY INSTRUCTIONS AND RETURN AUTHORIZATION,
PLEASE CALL OR EMAIL CRANE CUSTOMER CARE.**

CRANE USA, INC
1015 Hawthorn Dr., Itasca, IL 60143

Toll Free: 1-888-599-0992
(Monday – Friday 9:00am – 4:00pm CST)
Email: customer-service@crane-usa.com
Website: www.crane-usa.com

Crane

DESIGN FOR BETTER LIVING