

Crane

2 LITER Dehumidifier

FOR MODEL: EE-1000



If you have any questions about the operation of your dehumidifier, please contact Crane Customer Care.

Toll Free: 888-599-0992

Email: customer-service@crane-usa.com



**PLEASE READ AND SAVE ALL INSTRUCTIONS TO ENSURE
THE SAFE AND EFFECTIVE USE OF THIS DEHUMIDIFIER.**

SAVE YOUR DATED PROOF OF PURCHASE!

[You will need this in case of warranty]

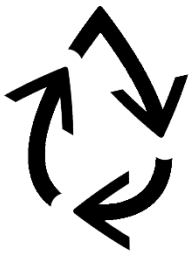


staple
tape
or paperclip
your
receipt
HERE

TABLE OF CONTENTS

Table of Contents & Sustainability	P. 3
Safety Instructions	P. 4-5
List of Main Parts & Technical Specifications	P. 6
Assembly & Use	P. 7
Maintenance	P. 8
Customer Care & Troubleshooting	P.9
Warranty	P. 10

CRANE & SUSTAINABILITY



Crane USA is dedicated to your environment both inside and outside your home. We know if cleaned and maintained properly, our products last for years helping to reduce unnecessary use of resources and emissions making new products.

The Crane manual you are holding is from recycled materials with no added finishes or harmful dyes. If the dehumidifier should no longer operate, please be sure to dispose of the unit in an environmentally friendly way by taking it to a public collection point.

PLEASE DO NOT PLACE BROKEN DEHUMIDIFIERS WITH YOUR REGULAR HOUSEHOLD WASTE.

IMPORTANT SAFETY INSTRUCTIONS



WARNING! READ AND SAVE THESE INSTRUCTIONS. Failure to follow all of the instructions listed below may result in electric shock, fire and/or serious personal injury.

When using electrical appliances, basic safety precautions should always be followed.

1. Do not operate the unit with a damaged cord or plug, after it malfunctions or has been dropped or damaged in any way. Return to an authorized service facility for examination and repair.
2. This unit should always be kept in an upright position to avoid any damage. The appliance must be placed on a level, flat surface during operation.
3. Check the household voltage to ensure it matches the units rated specification before operating.
4. Ensure that the air inlets and outlets are not blocked or covered.
5. Do not place the unit too close to curtains or other objects – min 40 cm.
6. Never place anything on top of the unit and do not cover with any kind of material while in use.
7. This product is intended for domestic and light office use ONLY and not for commercial, industrial or outdoor use.
8. To protect against electrical shocks, do not immerse unit, plug or cord in water, or spray with liquids.
9. Never unplug the power cord with the unit turn on.
10. Always unplug the unit when not in use or moving location. To disconnect from the power supply, grip the plug and pull from the power socket. Never pull by the cord.
11. Always empty the water tank before storing the unit away. Close supervision is necessary when any appliance is used by or near children and pets.
12. Do not run power cord under carpeting, or cover with rugs or runners. Arrange the cord away from areas where it may be tripped over.
13. Never operate or store the unit in direct sunlight.
14. To repair the unit, take it to a qualified service engineer. Repairs carried out by unqualified people may cause damage to the unit or injury to persons or property and void the warranty.
15. Where possible, avoid the use of an extension cable as they may overheat and cause a risk of fire. Only use an extension cord after ensuring it is in perfect condition.
16. Do not tamper with the unit. Tampering with the unit will void the warranty.
17. Do NOT handle the plug with wet hands.
18. Keep this product out of the reach of children and pets.

This appliance is not intended for use by persons (including children) with reduced physical, sensory or mental capabilities, or lack of experience and knowledge, unless they have been given supervision or instruction concerning use of the appliance by a person responsible for their safety. Children should be supervised to ensure that they do not play with the appliance.

GENERAL SAFETY INSTRUCTIONS



WARNING! Read and understand all instructions. Failure to follow all instructions listed below may result in electric shock, fire or serious personal injury. The warnings, cautions, and instructions discussed in this instruction manual cannot cover all possible conditions and situations that may occur. It must be understood by the user that common sense and caution are a factor which cannot be built into this product, but must be supplied by the user.

THIS DEHUMIDIFIER IS NOT A TOY!

Do not let your child play with this dehumidifier. Serious injury and electrocution might be possible. This dehumidifier has to be operated by an adult only. Children should be supervised to ensure that they do not play with the dehumidifier.

SAVE ALL INSTRUCTIONS!

CAUTION: A short Power Supply Cord is provided to reduce the risk of personal injury resulting from becoming entangled in or tripping over a longer cord. Extension cords are available from local hardware stores and may be used if care is exercised in their use. If an extension cord is required, special care and caution is necessary. Also the extension cord must be (1) marked with an electrical rating of 125 V and at least 13 A., 1625 W., and (2) the cord must be arranged so that it will not drape over the countertop or tabletop where it can be pulled on by children or accidentally tripped over.

ELECTRIC POWER

If the electric circuit is overloaded by other appliances, your dehumidifier and/or appliances may not operate properly. The dehumidifier should be operated on a separate electrical circuit from other operating appliances.

POLARIZED PLUG

This dehumidifier has a polarized plug (one blade is wider than the other). As a safety feature to reduce the risk of electrical shock, this plug is intended to fit in a polarized outlet only one way. If the plug does not fit fully in the outlet, reverse the plug. If it still does not fit, contact a qualified electrician. Do not attempt to defeat this safety feature. Not sure of plug



SAFETY WARNING

Although your dehumidifier is easy to operate, for your safety, the below warnings must be followed:

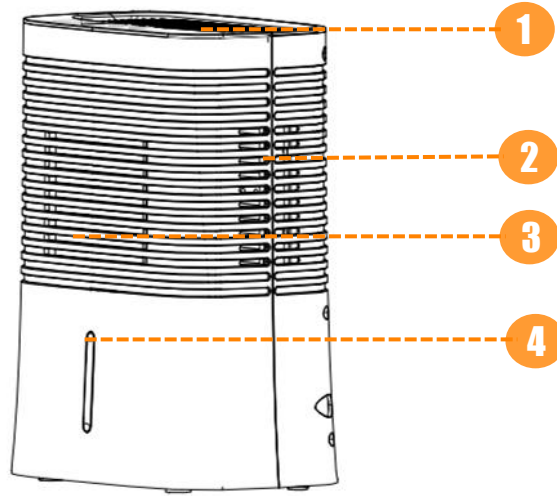
1. Do not place the dehumidifier near a heat source.
2. Never leave the dehumidifier unattended while connected to the electrical outlet.
3. Never operate the dehumidifier in an area that is likely to accumulate standing water.
4. Use the dehumidifier on a smooth, flat, lint-free, non-metallic, waterproof, and level surface away from water.
5. Do not unplug from the wall socket by pulling on the supply cord.
6. The dehumidifier must be unplugged:
 - A. Before either filling or emptying the Water Basin and/or Water Tank.
 - B. Before any cleaning or maintenance is performed.
 - C. After each use.
 - D. If it appears to be faulty.

THIS PRODUCT IS INTENDED FOR HOUSEHOLD USE ONLY.

LIST OF MAIN PARTS

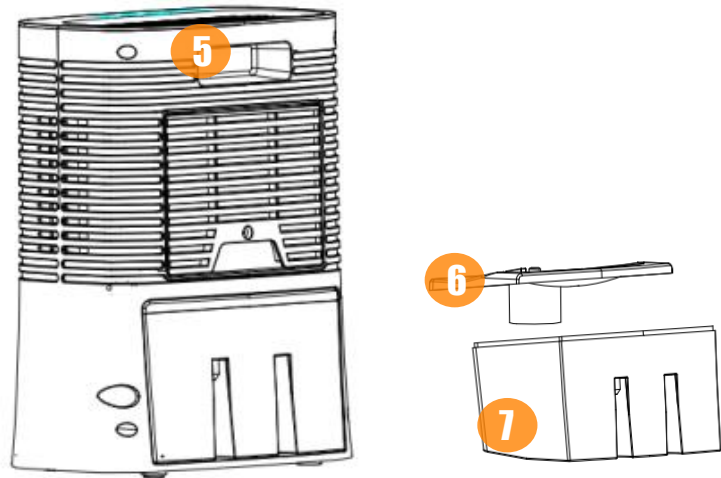
Front of Dehumidifier

1. Control Panel
2. Air Outlet
3. Air Inlet
4. Water Level Window



Back of Dehumidifier

5. Handle
6. Water Tank Cover
7. Water Tank



TECHNICAL SPECIFICATIONS

Rating Voltage	120V
Frequency	50/60Hz
Noise	<37 decibels from 3 ft. away
Power	75W +/- 10%
Water Tank Capacity	4 pints (0.5 Gallon)
Dehumidifying Rate on High	400ml/day +/- 30%

*Rate of absorption may vary depending on relative humidity and the temperature in the room. Estimate is based on 86% RH and 80 degrees F.



CAUTION

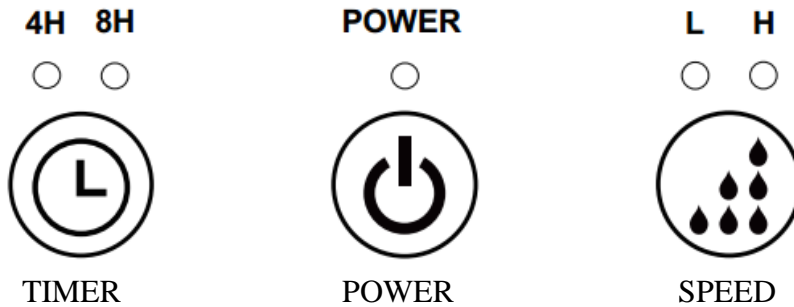
- DO NOT plug or unplug the Power Cord with wet hands as electric shock could occur.
- Do not use the unit when the power cord or plug is broken, or the socket is loose.
- Do not switch the unit on when the water tank is full or when the unit is upside down.

ASSEMBLY & USE

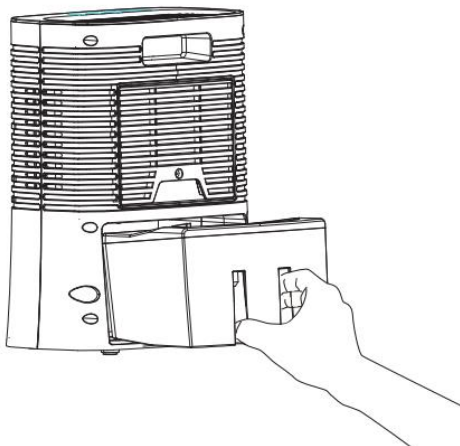
This dehumidifier is designed for removing excess moisture from small spaces such as bathrooms, boats, closets, laundry rooms and small offices.

Plug in the unit's power plug into a 120V AC electrical outlet. Please use an AC electrical outlet as stated on the label. A higher voltage may lead to a malfunction causing fire or electric shock.

CONTROL PANEL



- ON and OFF: Press the Power button to turn the appliance ON. Press the Power button again to turn the appliance OFF. When the appliance is ON, the Power indicator light will turn blue. The default fan setting speed will be high.
- To Set the Dehumidifying Speed: Press the Speed button to choose "L" for low speed mode or choose "H" for high speed mode. Low speed mode is suitable for condition with less moisture or night use. High speed mode with higher dehumidifying efficiency is suitable for condition with more moisture or day use.
- To Set the Timer: Press the Timer button to set the operation time. The unit will automatically turn off after the set period of time. The unit can be set to turn off after 4 or 8 hours.



WHEN TANK IS FULL OF WATER:

The dehumidifier will stop working when water tank is full and the Power indicator light will turn red. To continue using the unit, remove the water tank, empty it, and place the water tank back into the unit, as shown in the right diagram.

ATTENTION: Do not re-use or consume the water collected in the tank as it may contain germs, bacteria, fungi, and microorganisms.

MAINTENANCE

Before cleaning the unit, turn the unit off and unplug it from the power socket to prevent electric shock or accidents.

Wait until the unit cools down before for cleaning.

MAINTAINING THE EXTERIOR OF THE UNIT

Use a wet and soft cloth to wipe the surface of the unit, and a cotton swab to wipe the dust on the grill of the air inlets and air outlets.

Clean only the exterior of the unit.

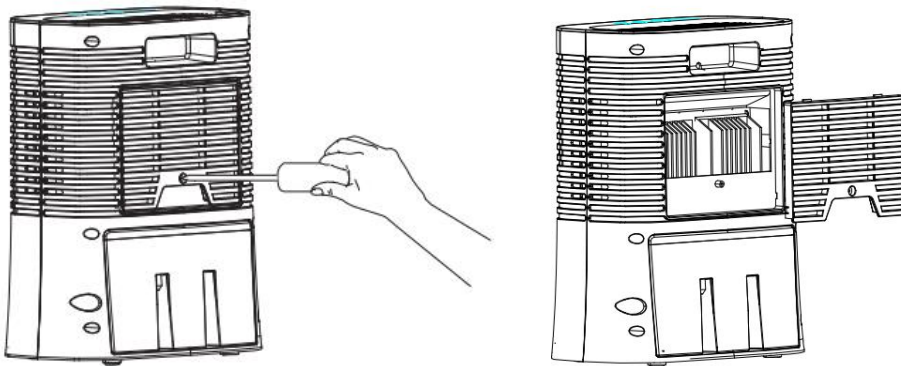
Attempting to clean the inside of the unit may cause electric shock.

MAINTAINING THE WATER TANK

- Clean the water tank and water tank cover under running water after emptying the tank.
- A soft cloth may be used to clean away any residue.
- Use a soft dry towel to dry the water tank and water tank cover or let them air dry before placing them back into the dehumidifier.

CLEANING THE BACK AIR INLET

To clean the back air inlet, unscrew the screw to take out the back air inlet, then use a wet cloth to wash it. Dry it before reassembling into the unit.



PLEASE NOTE:

Do not use solvents, gasoline, xylene or talcum powder to clean the unit or water tank as this may cause deterioration or corrosion.

STORAGE INSTRUCTIONS

If the unit will not be used for a long time:

1. Empty and clean the water tank. Wipe it dry with a clean, dry cloth, and re-install it into the unit.
2. Pack the dehumidifier into a box or its original packaging to avoid dust from collecting on the unit. Store in a cool and dry place.

CRANE CUSTOMER CARE

CALL US: 888-599-0992 (Mon-Fri 9:00am – 4:00pm CST)

EMAIL US: customer-service@crane-usa.com

LIVE CHAT: available at www.crane-usa.com

TROUBLESHOOTING

- Please refer to the under table for troubleshooting.
- If the problems cannot be solved in the following ways, contact maintenance center.

Problem	Probable Cause	Solution
Product is not powering on	Power plug not plugged in	Plug in the power plug
	Household circuit breaker	Reset your circuit breaker. If necessary, contact a licensed electrician.
	Unit is damaged or in need of repair	Stop operating and unplug the power plug. Contact Customer Service for assistance.
	The water tank is full or the tank is not put in correctly.	Empty the water tank and put it back, or re-install the tank correctly.
Product stops dehumidifying / No air comes out from air outlet.	Fans has overheated causing the product to stop operation.	The unit will start working automatically when the fan cools down.
	Air inlet or air outlet is blocked.	Remove any blockage from the air inlet or outlet.
Too Noisy	Unit is not on a stable surface.	Move the unit to a stable, flat surface.
Leaking	Tank may not be installed correctly.	Ensure the water tank lid is on the tank correctly and ensure the tank is pushed all the way in to the unit.

CRANE WARRANTY

For more information regarding the warranty policy,
please visit our website: www.crane-usa.com/customer-service

LIMITED WARRANTY

Thank you for purchasing a Crane product which has been tested to meet our stringent quality standards. This product is warranted to be free from manufacturing defects under normal use and conditions for 1 year.

**PLEASE CONTACT US BEFORE RETURNING THIS PRODUCT TO THE STORE.
CALL CRANE CUSTOMER CARE FOR PROBLEMS AND QUESTIONS. WE CAN HELP.**

WARRANTY REQUIRES A DATED PROOF OF PURCHASE.

This warranty is void if the defect is due to accidental damage, misuse, abuse, neglect, improper repair or alteration by unauthorized persons, or a failure to follow operating instructions provided with the product. This warranty does not apply to normal wear and tear or commercial use.

In no event shall liability exceed the purchase price paid by the purchaser of the product. Under no circumstances shall there be liability for any loss – direct, indirect or incidental – or consequential damage arising out of, or in connection with the use of this product.

This warranty is valid only in the 48 contiguous states plus the District of Columbia and excludes Puerto Rico and the Virgin Islands. This warranty is effective only if the product is purchased and operated in the United States of America.

Any instructions or warranty included in this manual may be subject to change without notice. For the most up-to-date instructions and warranty information, please contact us or visit our website.

**TO RECEIVE WARRANTY INSTRUCTIONS AND RETURN AUTHORIZATION,
PLEASE CALL OR EMAIL CRANE CUSTOMER CARE.**

CRANE USA, INC.
1015 Hawthorn Dr., Itasca, IL 60143

Toll Free: 1-888-599-0992 (Monday - Friday 9:00am - 4:00pm CST)
Email: customer-service@crane-usa.com
Website: www.crane-usa.com

Crane

DESIGN FOR BETTER LIVING