

# Crane

## SOOTHING COOL MIST AROMA DIFFUSER

FOR MODEL: EE-8003



If you have any questions about the operation of your aroma diffuser, please contact Crane Customer Care.

Toll Free: 888-599-0992

Email: [customer-service@crane-usa.com](mailto:customer-service@crane-usa.com)



**PLEASE READ AND SAVE ALL INSTRUCTIONS TO ENSURE**

**THE SAFE AND EFFECTIVE USE OF THIS AROMA DIFFUSER.**

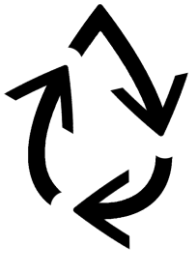
**SAVE YOUR DATED PROOF OF PURCHASE!**

[ You will need this in case of warranty ]

staple  
tape  
or paperclip  
your  
receipt  
HERE

# TABLE OF CONTENTS

Table of Contents, Sustainability	P. 3
Safety Instructions	P. 4-5
List of Main Parts	P. 6
Technical Specifications	P. 7
Use & Operation	P. 8
Maintenance	P. 9
Customer Care & Troubleshooting	P. 10
Warranty	P. 11



## CRANE & SUSTAINABILITY

Crane USA is dedicated to your environment both inside and outside your home. We know if cleaned and maintained properly, our products last for years helping to reduce unnecessary use of resources and emissions making new products.

The Crane manual you are holding is from recycled materials with no added finishes or harmful dyes. If the aroma diffuser should no longer operate, the top dome can be recycled as instructed by your recycling service. Please be sure to dispose of the rest of the unit in an environmentally friendly way by taking it to a public collection point.

**PLEASE DO NOT PLACE BROKEN AROMA DIFFUSERS  
WITH YOUR REGULAR HOUSEHOLD WASTE.**

# IMPORTANT SAFETY INSTRUCTIONS



**WARNING! READ AND SAVE THESE INSTRUCTIONS.** Failure to follow all the instructions listed below may result in electric shock, fire and/or serious personal injury.

1. **DO NOT move once the diffuser has been filled with water.**
2. DO NOT operate outdoors. This diffuser is intended for indoor use only.
3. Disconnect the diffuser from power before cleaning.
4. DO NOT operate without water. Always have water in the base when operating.
5. Use only clean, cool water to fill the base. Do not use hot water.
6. DO NOT pour water into any openings other than the base.
7. DO NOT cover any openings on the unit or insert objects into any openings.
8. DO NOT aim mist directly at children, pets, walls, furniture or electrical appliances.
9. Use only with the provided electrical cord.
10. **ALWAYS plug and unplug diffuser with dry hands to avoid electric shock.**
11. Never operate the diffuser with a damaged cord or plug.
12. Always place the unit on a smooth, flat, lint-free, non-metallic, waterproof and level surface.
13. Position the diffuser away from direct sunlight.
14. Keep the cord away from heated surfaces and areas where it could be walked on or tripped over.
15. Unplug the diffuser when not in use and whenever you clean or move the unit.
16. The diffuser should not be left unattended in a closed room.
17. The diffuser requires daily and weekly cleaning to operate appropriately. Refer to cleaning instructions.
18. NEVER use detergents, solvents or abrasive agents to clean the diffuser.
19. Do not tilt, tip or attempt to empty or fill the diffuser while it is in operation.
20. This device complies with Part 18 of the FCC Rules. This equipment has been tested and found to comply with the limits for a Consumer ISM equipment, pursuant to Part 18 of the FCC Rules. These limits are designed to provide reasonable protection against harmful interference in a residential installation. This equipment generates, uses and can radiate radio frequency energy and, if not installed and used in accordance with the instructions, may cause harmful interference to radio communications. However, there is no guarantee that interference will not occur in a particular installation. Please note that changes or modifications of this product is not expressly approved by the party responsible for compliance could void the user's authority to operate the equipment. If this equipment does cause harmful interference to radio or television receipt, which can be determined by turning the equipment off and on, the user is encouraged to try to correct the interference by one or more of the following measures:
  - Reorient or relocate the receiving antenna.
  - Increase the separation between the equipment and the receiver.
  - Connect the equipment into an outlet on a circuit different from that to which the receiver is connected.
  - Consult the dealer or an experienced radio/TV technician for help.

## SAVE THESE INSTRUCTIONS!

# GENERAL SAFETY INSTRUCTIONS



**WARNING!** Read and understand all instructions. Failure to follow all instructions listed below may result in electric shock, fire or serious personal injury. The warnings, cautions, and instructions discussed in this instruction manual cannot cover all possible conditions and situations that may occur. It must be understood by the user that common sense and caution are a factor which cannot be built into this product, but must be supplied by the user.

## THIS DIFFUSER IS NOT A TOY!

**Do not let your child play with this diffuser.** Serious injury and electrocution might be possible. This diffuser has to be operated by an adult only. Children should be supervised to ensure that they do not play with the diffuser.

## SAVE ALL INSTRUCTIONS!

**CAUTION:** A short Power Supply Cord is provided to reduce the risk of personal injury resulting from becoming entangled in or tripping over a longer cord. Extension cords are available from local hardware stores and may be used if care is exercised in their use. If an extension cord is required, special care and caution is necessary. Also the extension cord must be (1) marked with an electrical rating of 125 V and at least 13 A., 1625 W., and (2) the cord must be arranged so that it will not drape over the countertop or tabletop where it can be pulled on by children or accidentally tripped over.

### ELECTRIC POWER

If the electric circuit is overloaded by other appliances, your diffuser and/or appliances may not operate properly. The diffuser should be operated on a separate electrical circuit from other operating appliances.

### POLARIZED PLUG

This diffuser has a polarized plug (one blade is wider than the other). As a safety feature to reduce the risk of electrical shock, this plug is intended to fit in a polarized outlet only one way. If the plug does not fit fully in the outlet, reverse the plug. If it still does not fit, contact a qualified electrician. Do not attempt to defeat this safety feature.



### SAFETY WARNING

Although your diffuser is easy to operate, for your safety, the below warnings must be followed:

1. Do not place the diffuser near a heat source.
2. Never leave the diffuser unattended while connected to the electrical outlet.
3. To avoid any accidents, never cover the lid when the diffuser is in operation.
4. Use the diffuser on a smooth, flat, lint-free, non-metallic, waterproof, and level surface away from water.
5. Do not unplug from the wall socket by pulling on the supply cord.
6. The diffuser must be unplugged:
  - A. Before either filling or emptying the base.
  - B. Before any cleaning or maintenance is performed.
  - C. After each use.
  - D. If it appears to be faulty.

**THIS PRODUCT IS INTENDED FOR HOUSEHOLD USE ONLY.**

# LIST OF MAIN PARTS

**Fig. 1 (Base)**

1. Power Button
2. Light Effect Button
3. Plug Port



**Fig. 2 (Top of Base)**

4. Water Reservoir
5. Max Fill Indicator
6. Nebulizer



**Fig. 3 (Other Parts)**

7. Dome (Cover)
8. Mist Outlet
9. Detachable Cord



## TECHNICAL SPECIFICATIONS

Rating Voltage	100-240V
Frequency	50/60Hz
Water Capacity	250ML/8.45oz
Run Time	8-10 hours

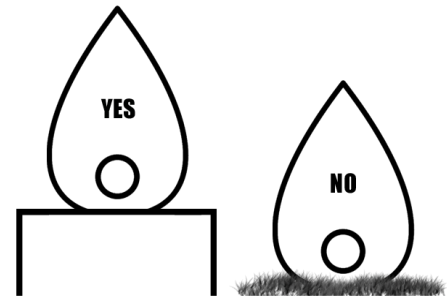
### BEFORE EACH USE:

#### CHECK DIFFUSER PLACEMENT:

Place the diffuser on an elevated, non-metallic, lint-free, waterproof, level surface at least 2 feet above the floor.

- **DO NOT PLACE ON CARPET OR TOWEL.** The fan vent is located on the bottom of the base. The fan vent **MUST NOT** be obstructed.

- **DO NOT PLACE ON WOOD SURFACE** or near furniture that can be damaged by oils or too much moisture.



#### CAUTION

- **DO NOT** attempt to operate the diffuser without water in the base.
- **DO NOT** plug or unplug the Power Cord with wet hands as electric shock could occur.

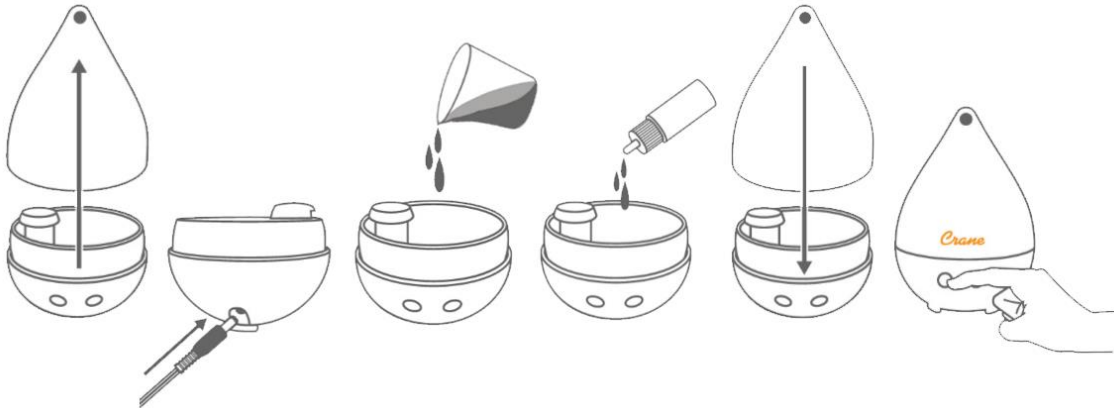
# ASSEMBLY & USE

1. Remove the Mist Dome from the base.
2. Plug the adapter cord into the base first, then plug the unit into a wall outlet.
3. Using a separate cup, fill the water reservoir in the base with up to 8.45oz of cool water/to the max line.

**DO NOT** Fill past max line.

**DO NOT** use hot water. Use cool water only.

**DO NOT** pour water into the Mist Channel.



## DO NOT MOVE THE DIFFUSER ONCE FILLED.

4. Add desired/recommended amount of oils or humidifier liquids to the water.
5. Replace the dome, making sure it fits perfectly.
6. Press Power Button:

- Press 1x: Mist on high
- Press 2x: Mist on low
- Press 3x: Mist OFF

7. Press Light Button:

- Press 1x: Changing light sequence on
- Press 2X: Freeze desired light color
- Press 3x: Light OFF

**\* Light function can run without the mist on as a night light**

8. The diffuser will automatically shut off when the water level is too low as a safety feature. Refill the water reservoir with water & desired essential oils as needed.
9. It is normal for the temperature of the water and adapter to increase while in operation.

## USING ESSENTIAL OILS or CRANE HUMIDIFIER LIQUIDS

**This Aroma Diffuser came with 2 complimentary Aroma Oil samples: Lavender & Eucalyptus (not available for purchase through Crane USA). The Aroma Diffuser is compatible to use with any of your favorite Essential Oil brands.**



# **AROMA DIFFUSER MAINTENANCE**

**IMPORTANT:** We recommend you clean your aroma diffuser every time you change oils. Essential oils can build up over time, so to ensure the best function of your diffuser, follow the below cleaning & maintenance instructions.

**DO NOT** leave water in the Water Reservoir when unit is not in use as it may result in the buildup of mineral deposits and bacteria that can inhibit the output efficiency of the diffuser. If water remains in the Water Reservoir for more than a day or two, bacterial growth is possible.

## **DAILY MAINTENANCE**

1. Turn off, unplug from outlet and empty water from reservoir daily.
2. Allow all parts to air dry.
3. Leave dome off the base until ready for next use.

## **WEEKLY MAINTENANCE**

1. Turn off, unplug from outlet and empty water from reservoir.
2. Wipe the exterior surface with soft, damp cloth.
3. Fill the Water Reservoir with ½ cup of water and 1 tablespoon of distilled white vinegar. Let sit for 20 minutes. Empty the water & rinse with clean, cool water.
4. Allow all parts to air dry.
5. Leave dome off the base until ready for next use.

**NEVER IMMERSE DIFFUSER BASE IN WATER.**

## **CLEANING OF DOME AND MIST NOZZLE**

1. Use a mixture of vinegar and water to clean and allow to dry before assembling.
2. You can immerse the dome in water to clean.

**WHEN STORING THE DIFFUSER, LET ALL PARTS DRY COMPLETELY BEFORE STORING AWAY IN A COOL, DRY PLACE UNTIL NEXT USE.**

## **CRANE CUSTOMER CARE**

**CALL US:** 888-599-0992 (Mon-Fri 9:00am – 4:00pm CST)  
**EMAIL US:** [customer-service@crane-usa.com](mailto:customer-service@crane-usa.com)  
**LIVE CHAT:** available at [www.crane-usa.com](http://www.crane-usa.com)

## **TROUBLESHOOTING**

**DO NOT attempt to repair the motor yourself.**

**If the diffuser continues to not operate, please contact Crane Customer Care.**

<b>Problem</b>	<b>Possible Solution</b>
<b>If diffuser does not have any power:</b>	<ul style="list-style-type: none"><li>▪ Ensure unit is properly plugged into a power outlet.</li><li>▪ Check that the plug is fully inserted into the bottom of the base.</li></ul>
<b>There is no mist being emitted:</b>	<ul style="list-style-type: none"><li>▪ Check the water level. The unit shuts off automatically when the water level is too low as a safety feature.</li><li>▪ Make sure nothing is blocking the Mist Output.</li><li>▪ Check the fan vent on the bottom of the base is not blocked.</li><li>▪ Empty and rinse the water reservoir with cool tap water.</li><li>▪ Check for possible mineral deposits &amp; clean using the instructions on page 9.</li></ul>

**NOTE: Spare Parts can also be purchased online at [www.crane-usa.com](http://www.crane-usa.com)**

# CRANE WARRANTY

For more information regarding the warranty policy,  
please visit our website: [www.crane-usa.com/customer-service](http://www.crane-usa.com/customer-service)

## LIMITED WARRANTY

Thank you for purchasing a Crane product which has been tested to meet our stringent quality standards. This product is warranted to be free from manufacturing defects under normal use and conditions for 1 year.

**PLEASE CONTACT US BEFORE RETURNING THIS PRODUCT TO THE STORE.  
CALL CRANE CUSTOMER CARE FOR PROBLEMS AND QUESTIONS. WE CAN HELP.**

### WARRANTY REQUIRES A DATED PROOF OF PURCHASE.

This warranty is void if the defect is due to accidental damage, misuse, abuse, neglect, improper repair or alteration by unauthorized persons, or a failure to follow operating instructions provided with the product. This warranty does not apply to normal wear and tear or commercial use.

In no event shall liability exceed the purchase price paid by the purchaser of the product. Under no circumstances shall there be liability for any loss – direct, indirect or incidental – or consequential damage arising out of, or in connection with the use of this product.

**This warranty is valid only in the 48 contiguous states plus the District of Columbia** and excludes Puerto Rico and the Virgin Islands. This warranty is effective only if the product is purchased and operated in the United States of America.

Any instructions or warranty included in this manual may be subject to change without notice. For the most up-to-date instructions and warranty information, please contact us or visit our website.

**TO RECEIVE WARRANTY INSTRUCTIONS AND RETURN AUTHORIZATION,  
PLEASE CALL OR EMAIL CRANE CUSTOMER CARE.**

**CRANE USA, INC.**  
1015 Hawthorn Dr., Itasca, IL 60143

Toll Free: 1-888-599-0992 (Monday - Friday 9:00am - 4:00pm CST)  
Email: [customer-service@crane-usa.com](mailto:customer-service@crane-usa.com)  
Website: [www.crane-usa.com](http://www.crane-usa.com)

*Crane*

DESIGN FOR BETTER LIVING